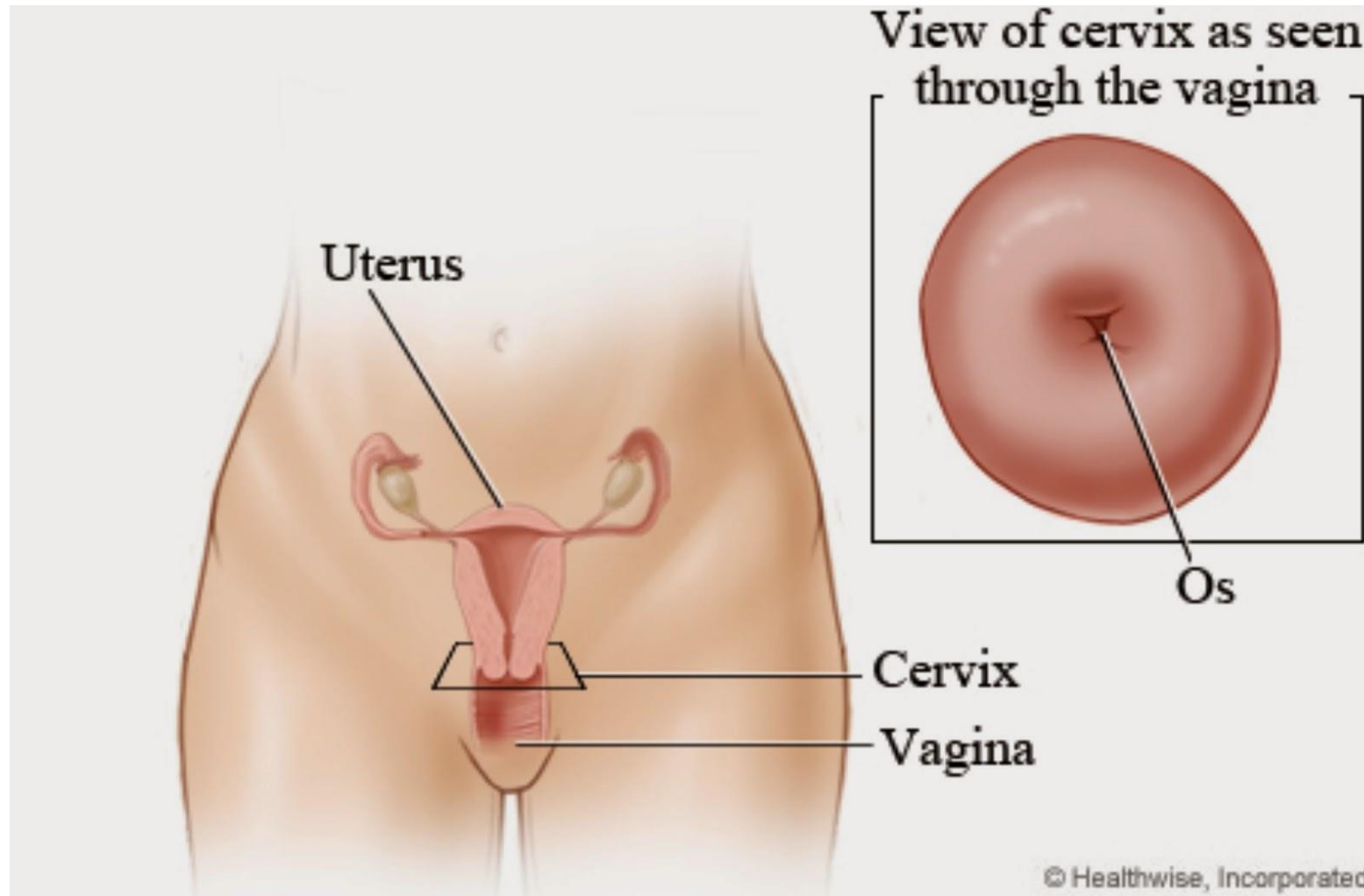


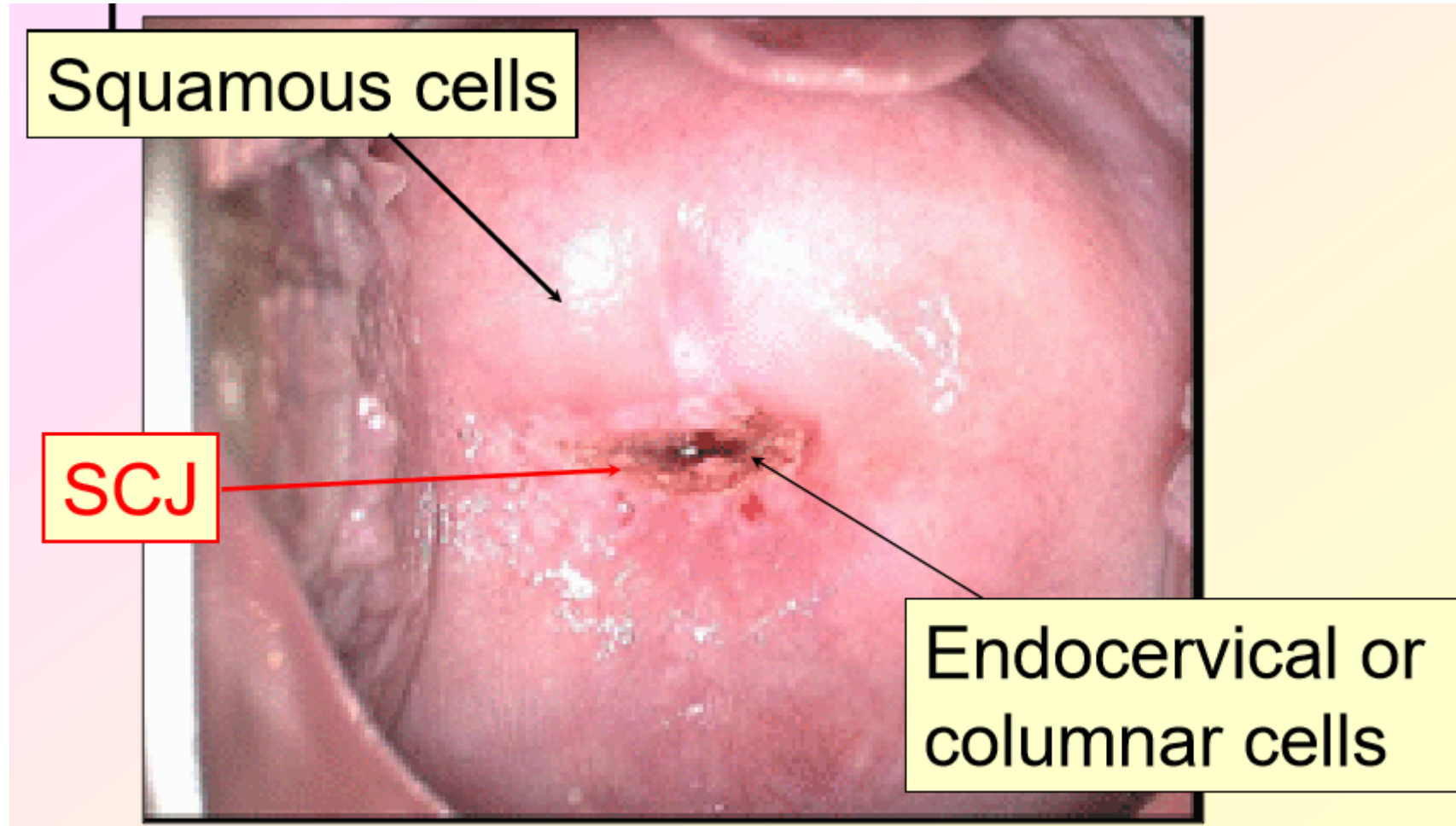
# Cervix types classification

# Background – the cervix

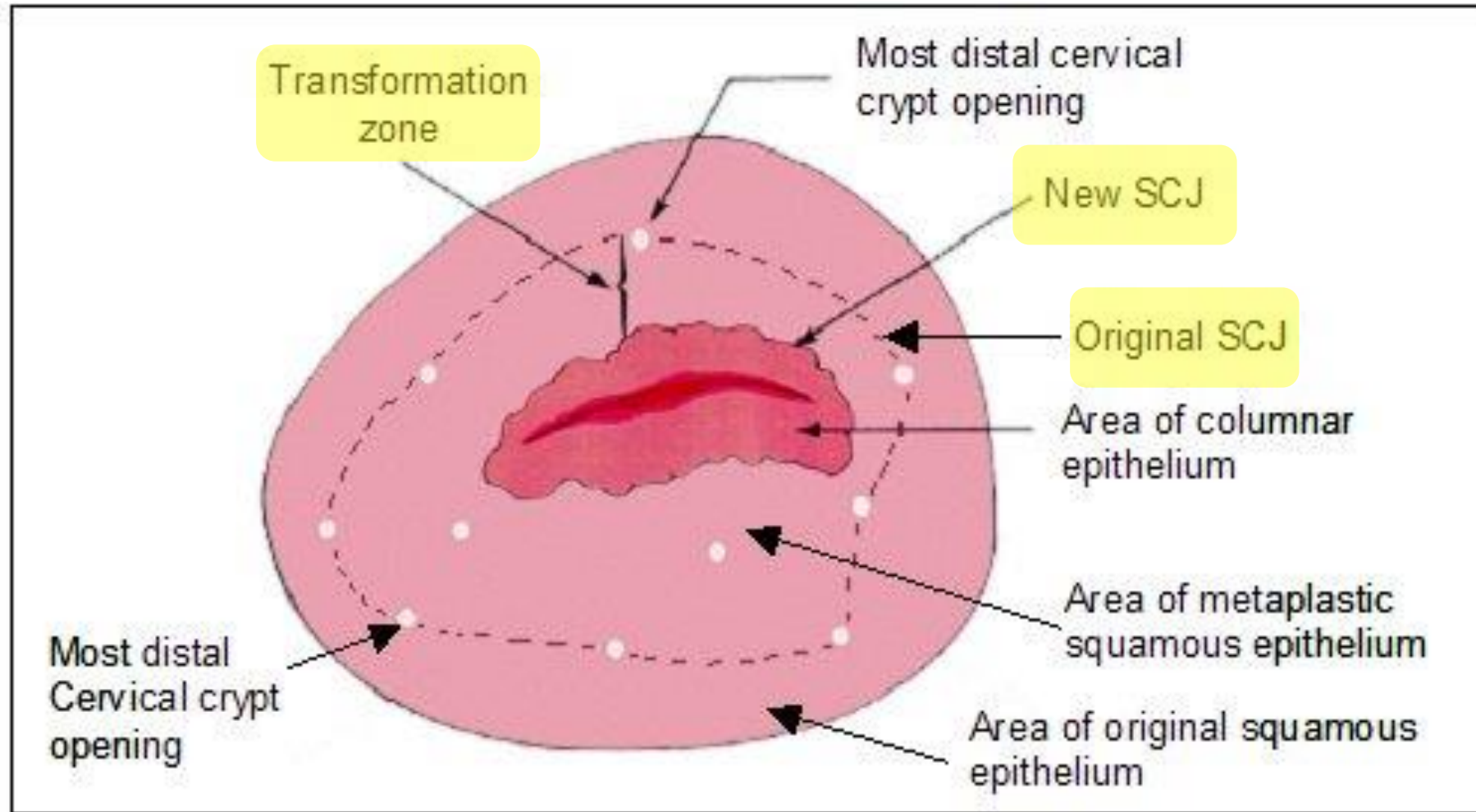


# Background – the cervix





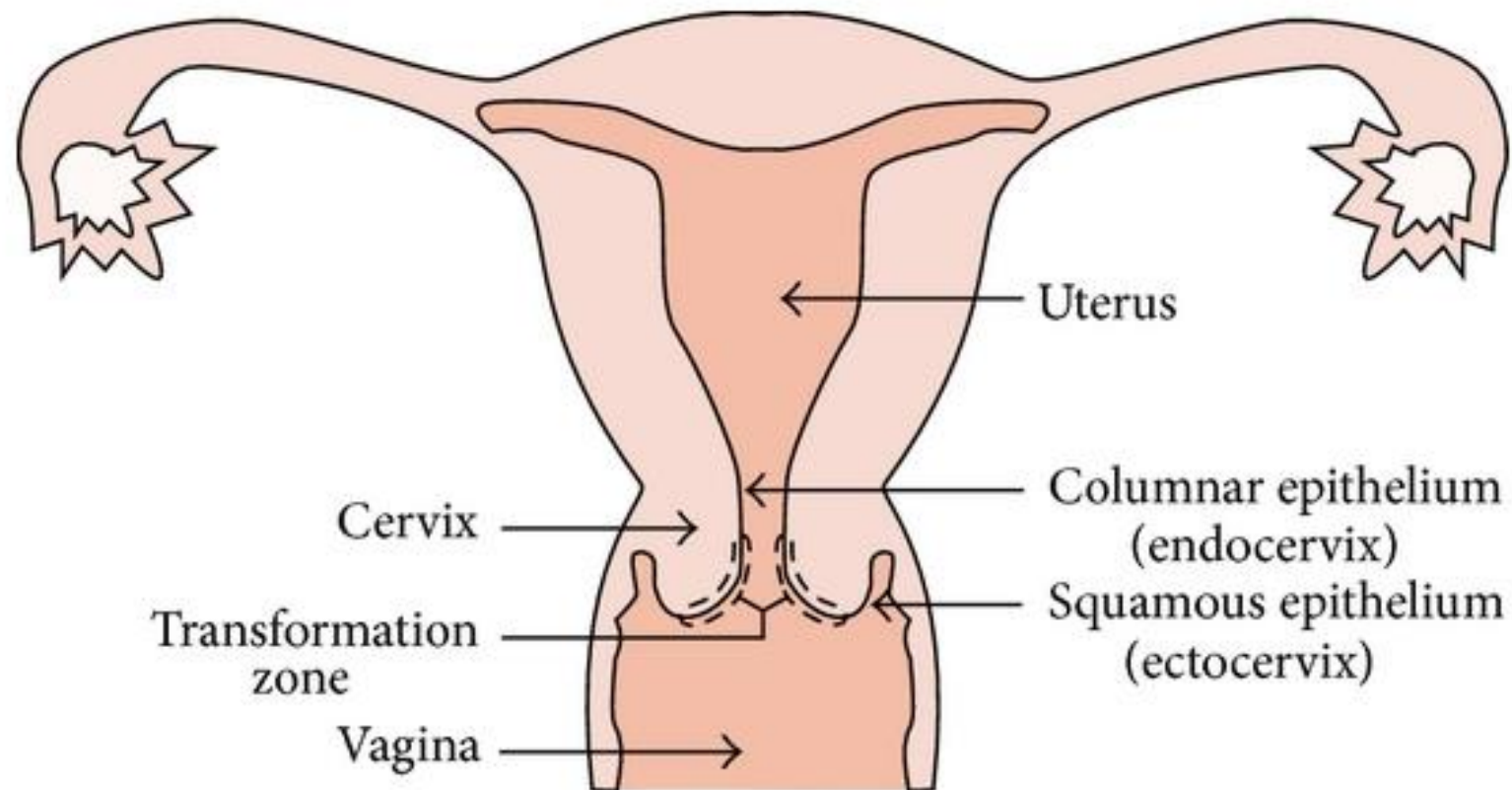
# Cervix basic anatomy



## **Two important areas of the cervix**

1. Squamo-columnar junction (SCJ) -2 different types of epithelial cells meet
2. Transformation Zone (TZ) -area between the original SCJ and the new SCJ

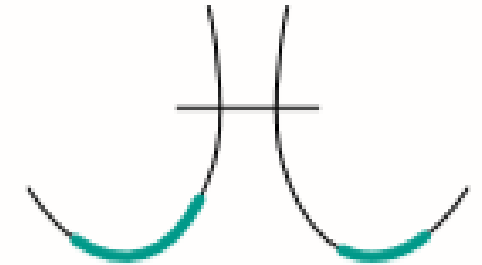
## Endocervical Vs ectocervical



## Different transformation zone locations = Different Cervix type

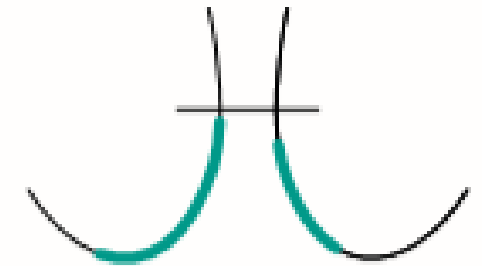
### Type 1

- Completely ectocervical
- Fully visible
- Small or large



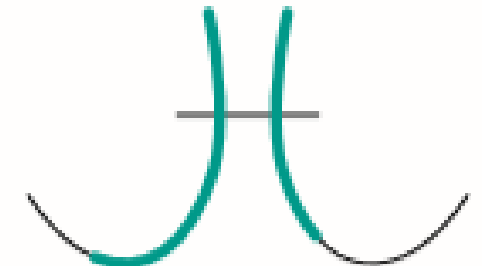
### Type 2

- Has endocervical component
- Fully visible
- May have ectocervical component which may be small or large



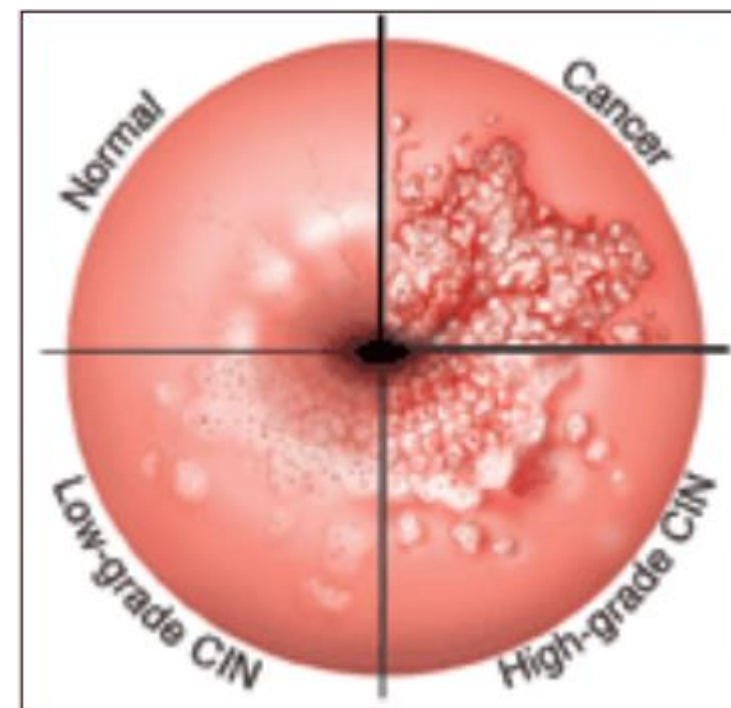
### Type 3

- Has endocervical component
- Is not fully visible
- May have ectocervical component which may be small or large



## Why is the cervix type important?

- Most cervical cancers begin in the cells in the transformation zone
- Cervix types 2 and 3 might include hidden lesions and require different treatment



Type 1



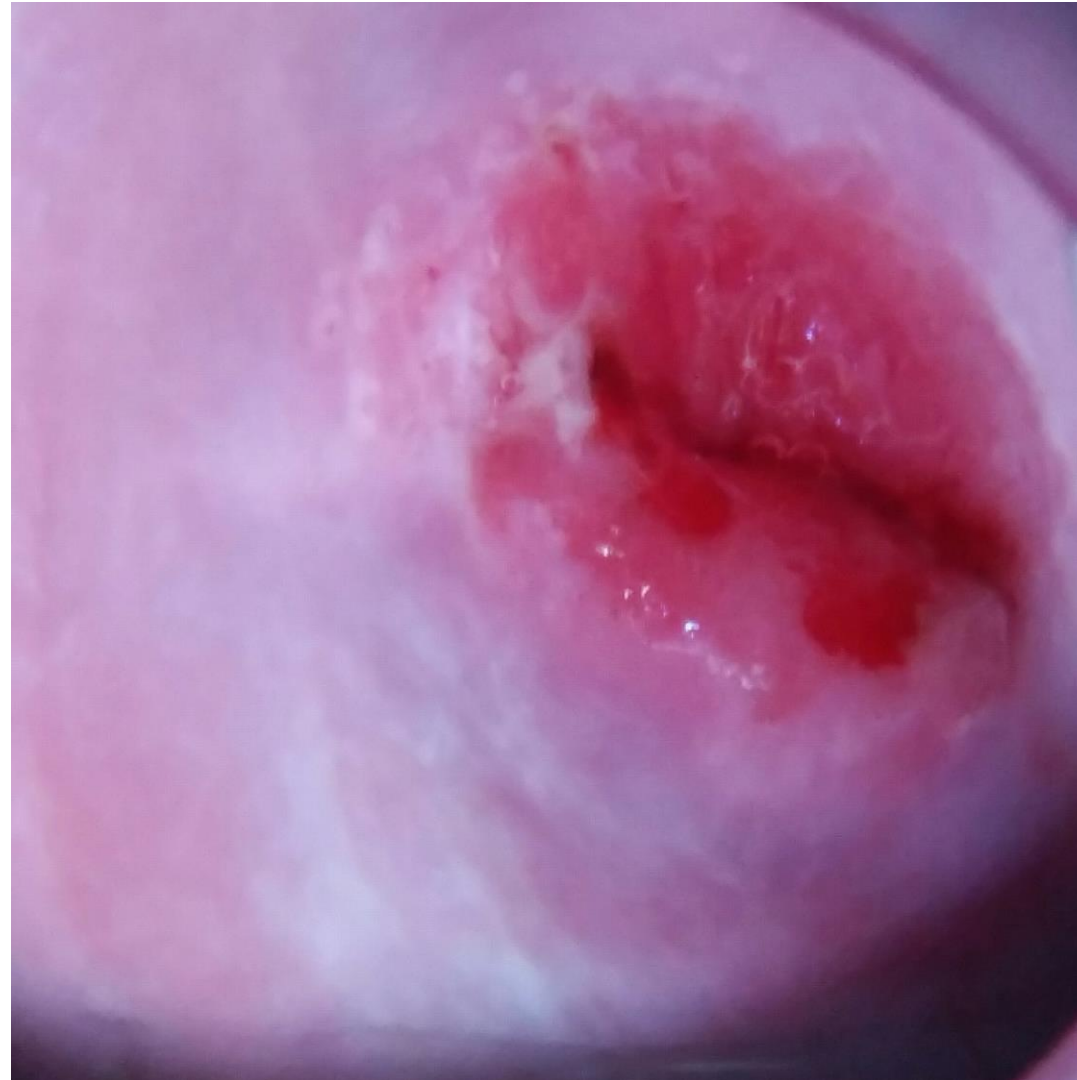
Type 2



Type 3



Type 2



Type 1



Type 2



Type 3

